



**Company Profile**

Geotechnics

Environment

Groundwater

Rock Mechanics

Geophysics

Earthworks

# Welcome

---

*Douglas Partners is an Australian employee-owned professional engineering consulting firm.*

*We specialise in the fields of:*

- *Geotechnics*
- *Environment*
- *Groundwater*
- *Rock Mechanics*
- *Geophysics*
- *Materials Testing*

*We believe that the hallmark of a good consultant is being a trusted business partner in whom clients have confidence.*

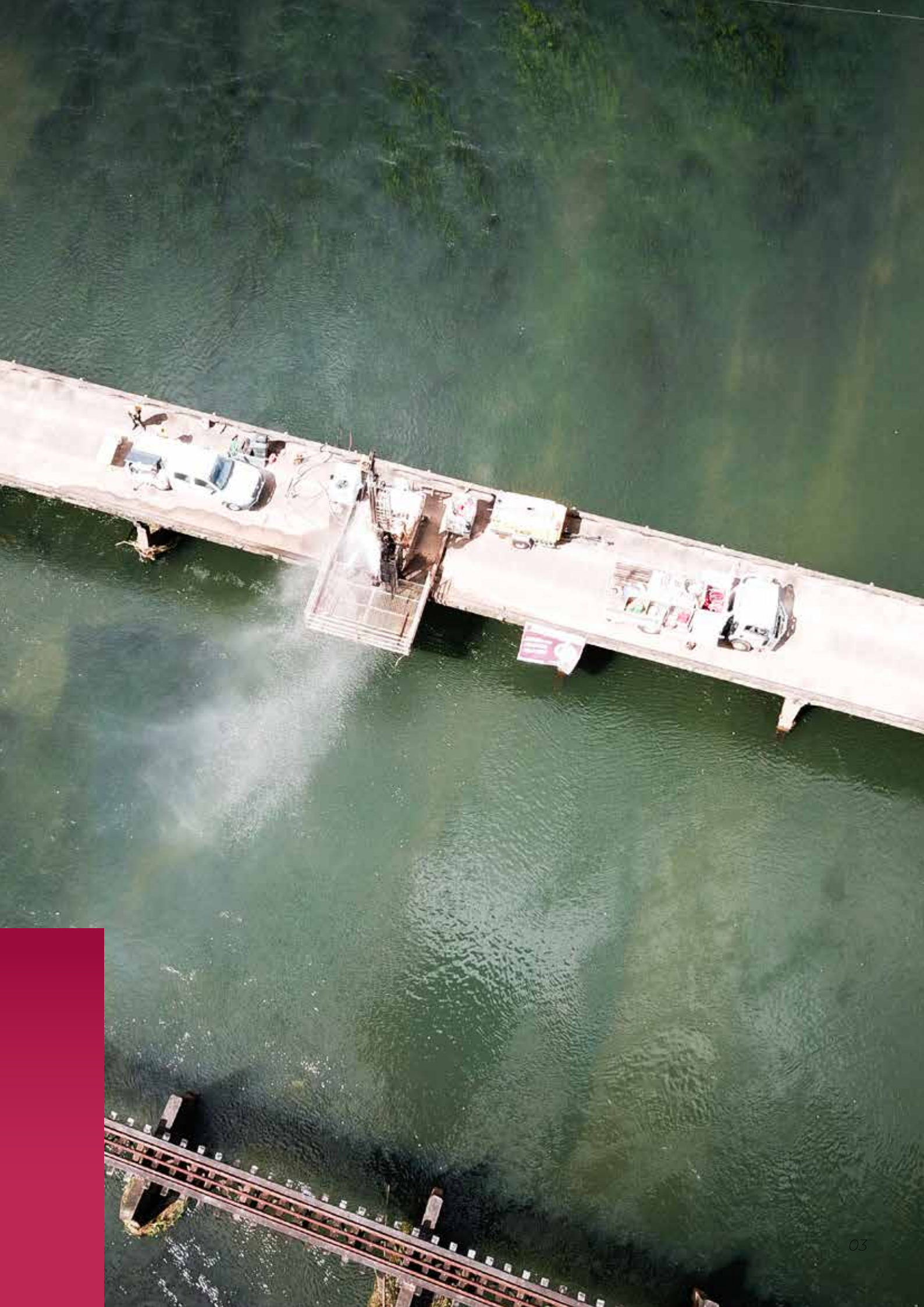
*Douglas Partners' approach to building trust and a mutually satisfying long term relationship with our clients, is to listen to their needs and set ourselves the highest standards in respect of accuracy, interpretation, presentation and delivery of our core services.*

*In applying 'state of the art' technology and having integrity in our advice, solutions and technical standards, we aim to deliver a responsive and reliable service to maintain excellent and productive working relations with all clients.*

*Our goal is to understand and satisfy our clients' needs by developing and providing practical, workable, 'world class' solutions and cost-effective alternatives based upon our 60 plus years of experience.*

**WILL WRIGHT**  
**Managing Director**





Douglas Partners' origins began in the early 1960's when the late Don Douglas established and developed the geotechnical engineering and testing services of Frankipile Australia Ltd (a leading piling contractor) under the name 'Ground Test.'



# Experience and expertise

---



*Douglas Partners provides grounded solutions for the built environment.*

*Specialist disciplines include geotechnical engineering, rock mechanics, contaminated land, groundwater, geophysics and earthworks. We have wide regional coverage, with over 600 staff in 20 branches across Australia including 14 NATA registered laboratories.*

*This allows staff and resources to be available on the ground to service projects quickly and reliably. Our specialist disciplines work closely together to provide integrated and efficient service and solutions.*

*Quality is central to our operations.*

*Our ISO9001 accredited Quality Assurance system underscores our commitment to excellence. Our culture embodies our guiding mantra: "Keep it Simple, Get it Right, Do it Well."*

*Our success is due to the skills, experience and character of our staff, many of whom have postgraduate qualifications and international experience. Douglas Partners is owned and managed by its employees, with the ownership spread widely among consulting staff. This is a key element of Douglas Partners' success, allowing long term stability and providing high levels of staff engagement.*

# 'State-of-the-art' equipment and technologies

---

*From the days of Don Douglas we have aimed at: "Highest quality standards in regard to technology and its application, accuracy and presentation". In today's age of fast paced technological change we are increasingly investing in research and development of systems and techniques to allow us to provide reliable and efficient solutions for our clients.*

*We maintain a wide range of advanced field testing and monitoring equipment to provide the most comprehensive and accurate data for our clients' projects.*

*In addition, Douglas Partners' sister company, Ground Test, owns and operates 10 drilling rigs, 4 cone penetration testing rigs and a comprehensive range of in-situ testing equipment. Our in-house desktop GIS database contains over 130,000 completed project records. This resource provides background knowledge and an understanding of both site specific and regional conditions, assisting with providing prompt advice and solutions, and in many cases avoiding unnecessary costs for our clients.*

## Excellence Leadership Culture

---

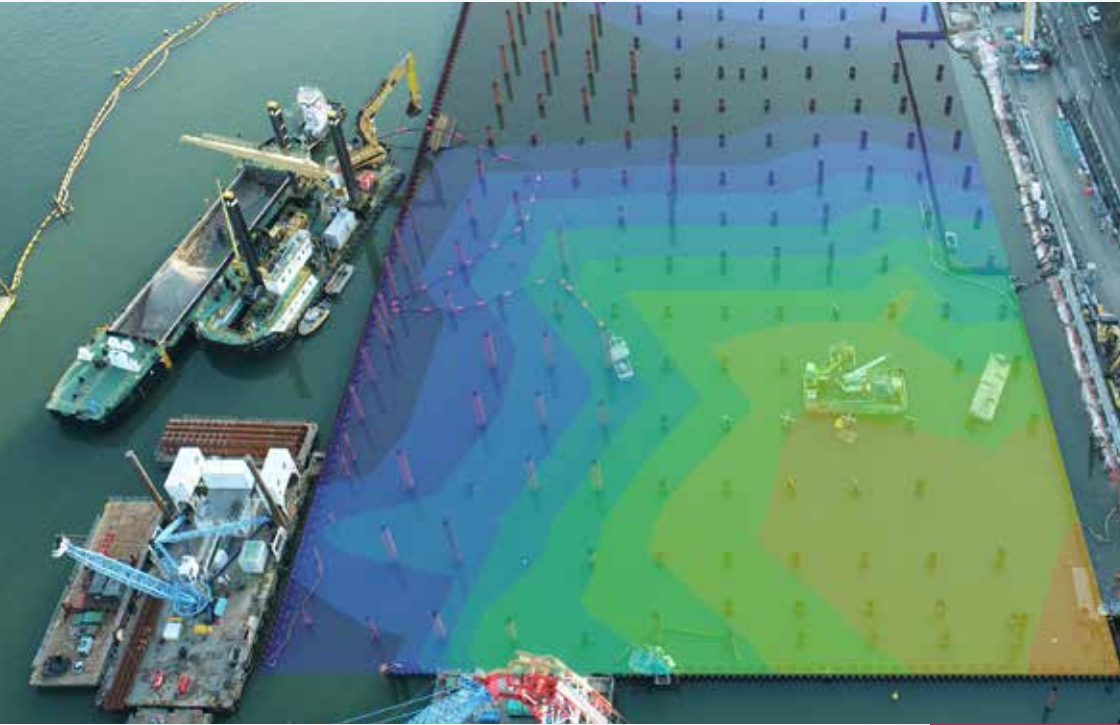
*At Douglas Partners, we hold technical expertise in the highest regard.*

*Our commitment to excellence begins with recognizing the importance of quality at every stage of our processes. We place a strong emphasis on collaboration, pooling our collective knowledge and experience to deliver grounded solutions. It's our unwavering dedication to technical excellence and the pursuit of quality that sets us apart. Our collaborative approach ensures that every project we undertake is marked by precision, expertise, and a commitment to achieving excellence at every step.*



*Our in-house desktop  
GIS database contains  
over 130,000 completed  
project records.*





# Geotechnics

*Douglas Partners' Geotechnical team has a proven track record in detailed investigations, provision of support services during design stage and construction supervision and monitoring. Our highly experienced and innovative Geotechnical consulting staff provide clients with services and support in the following areas:*

- *Geotechnical investigation;*
- *Geotechnical analysis and design;*
- *Construction monitoring, inspections, testing and advice;*
- *Terrain evaluation and land capability;*
- *Specialist in-situ testing, drilling and sampling;*
- *Geomechanics for near shore and off shore structures;*
- *Quarry products and resource assessment;*
- *Mining geotechnics; and*
- *Engineering geology and slope stability assessments.*



# Environmental

---

*Douglas Partners' Environmental team is able to assist clients with managing the impact of their project on our natural resources and navigate complex environmental regulations. Our team of highly skilled and experienced Environmental consultants provide clients with services and support in the following areas:*

- *Contaminated land assessment and management;*
- *Waste management;*
- *Remediation services;*
- *Salinity and acid sulfate soils assessments;*
- *Environmental management plans;*
- *Landfill;*
- *Marine dredging and environmental studies; and*
- *Environmental auditing services.*

*"This team is efficient and service orientated and the level of mutual trust between our organisations ensures that Douglas Partners are our first choice consultant."*

**David Bobyreff**  
**Director, Minotaur Project Management**



# Groundwater

---

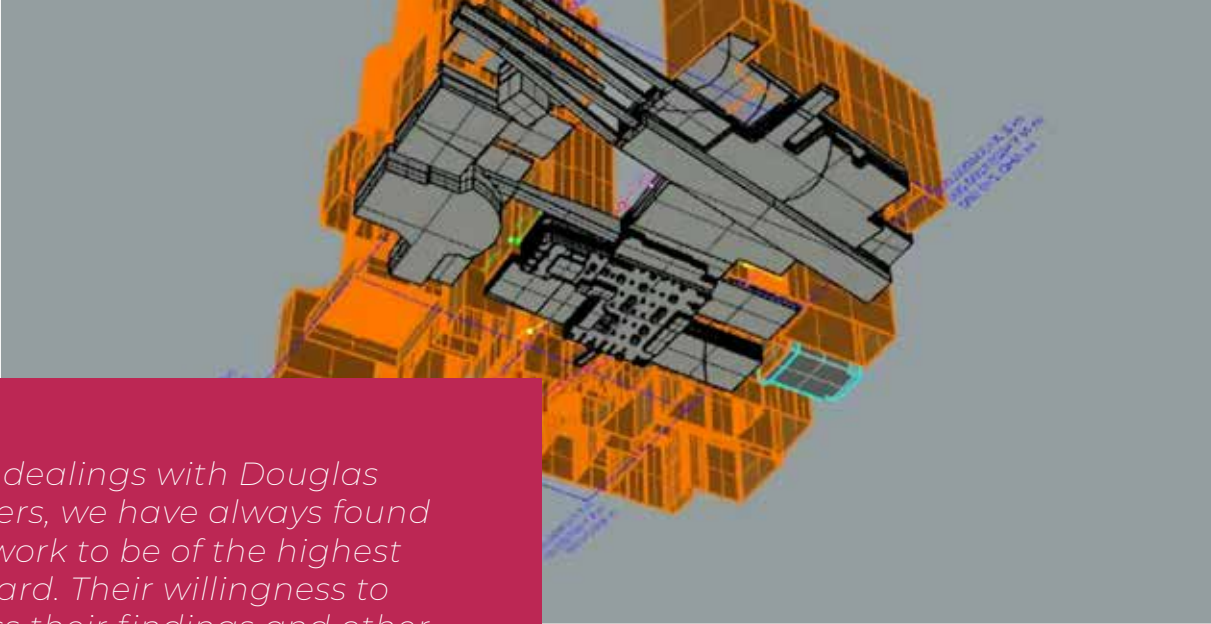
*Douglas Partners' Groundwater team can assist clients' projects in the development, control and protection of groundwater resources. Our team of highly qualified and specialist Groundwater and Hydrogeological consulting staff provide clients with services and support in the following areas:*

- *Numerical modelling;*
- *Groundwater supplies;*
- *Mine, industrial and commercial development*
- *Groundwater contamination;*
- *Environmental assessment and management protection;*
- *Water quality monitoring; and*
- *Bore rehabilitation.*



*"At all times we have found that Douglas Partners has provided a high level of service to us. Their advice has been reliable and they have been very timely in their service delivery. Based on our experience to date, we wouldn't hesitate to engage them in the future."*

**Stephen Parkin**  
Director, Armstrong Parkin Architects



*“In all dealings with Douglas Partners, we have always found their work to be of the highest standard. Their willingness to discuss their findings and other geotechnical issues has always been very much appreciated.”*


**David Slack**  
Manager, Davron Engineering Pty Ltd



## Rock Mechanics

---

*Douglas Partners' Rock Mechanics team is able to assist clients with both civil and mining projects. Our team of highly regarded and knowledgeable Rock Mechanic consultants provide clients with services and support in the following areas:*

- *Design of drifts, shafts and on-seam works for coal mines;*
  - *Design of tunnel support in low strength rock;*
  - *Open cast pit stability;*
  - *Deep basements;*
  - *Retaining walls;*
  - *Underpinning; and*
  - *Rock slope stabilisation.*
- 



*“When Sheargold engage Douglas Partners for assistance with challenging geotechnical issues, we are confident that we are getting the industry’s best practice solutions with a cost-conscious approach to the project.”*

**Ryan Duff**  
Development Manager Sheargold

# Geophysics

---

*Douglas Partners’ Geophysics team can assist clients seeking to determine in situ physical properties of soil and rock masses, and to identify physical property contrasts.*

*Our team of highly qualified and experienced Geophysical consulting staff can provide clients with services in the following areas:*

- *Assessment of properties for design of individual structures;*
- *Monitoring construction;*
- *Environmental protection procedures;*
- *Non-intrusive investigations, particularly relevant in areas of difficult access for conventional investigation plant and in large sites where screening is required to select optimum structures:*
- *Seismic risk assessment;*
- *Pollution plume detection;*
- *Determination of soil and rock strength parameters;*
- *Groundwater exploration and monitoring; and*
- *Underground and underwater search.*



# Materials Testing

---

*Douglas Partners maintains well equipped NATA accredited testing laboratories and a team of appropriately qualified and experienced engineers, laboratory managers and laboratory technicians.*

*We comply with current Australian Standards and International Standards such as British Standards (BS), American Society of Testing and Materials (ASTM), and various State test methods.*

*Our laboratories can provide clients with services including:*

- *Soil classification tests;*
- *Aggregate tests;*
- *Soil compaction and density tests;*
- *Soil strength and consolidation tests;*
- *Soil permeability and dispersion tests;*
- *Soil reactivity tests;*
- *Penetration and deflection tests;*
- *Concrete testing; and*
- *Rock Testing.*



*“Pritchard Francis has been seeking an innovative geotechnical solution to help deliver significant cost savings in construction costs. We have found Douglas Partners to be a strong partner in this environment.”*

**Chris Tyler**  
**Director, Pritchard Francis**



# Delivering with integrity

---

*Our purpose it is to provide our clients with “Grounded Solutions for the built environment”.*

*Our purpose is supported by our objectives to:*

- *Foster a safe, inclusive and innovative culture with efficient systems and diverse staff.*
- *Provide outstanding client service with integrity to deliver practical solutions aligned with client requirements and our values; and*
- *Sustainably grow our business to provide opportunities for staff and maintain ownership in the hands of employees, enabling staff to benefit from our collective efforts. Staff are encouraged to adapt, learn and grow their expertise and character to full potential;*



## The Douglas way

*We value good Character. In fact we recruit, recognise, review and reward our staff based on the character shown in meeting our company objectives.*

*Our core values are:*



### People

*Safety comes first in all we do. We foster an inclusive and collaborative culture, enabling all to thrive. We build trusted relationships and are defined by how well we take care of them.*

*We strengthen connections and make a positive difference where we work and live.*



### Improvement

*We're proud of our industry-leading processes and are always looking for ways to improve.*

*We make improvement a daily habit as continuous improvements lead to sustainable innovation.*



### Integrity

*We do what's right for the environment, client and community.*

*Customers choose us because they trust our name and people. We earn that trust by always acting honestly and with the highest level of integrity.*



### Excellence

*We pride ourselves on our high level of technical expertise.*

*We recognise quality is important in every step of the process.*

*We work collaboratively, combining our collective knowledge and experience to provide grounded solutions.*

# Services Across Sectors

---

*Douglas Partners consulting services provide our clients with a range of integrated and specialist skills with the aim of delivering practical solutions across a large number of business sectors including:*



DEFENCE



WATER



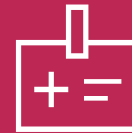
TRANSPORT



RESOURCES



ENERGY



HEALTHCARE



PROPERTY &  
BUILDINGS



MARINE



LAND  
DEVELOPMENT



SPORT &  
RECREATION



WASTE  
MANAGEMENT



TELE-  
COMMUNICATIONS





# Award-Winning Performance

*We strive to provide outstanding client service on each and every project. It's a testament to our consistency that we have been finalists in the prestigious Financial Review Client Choice Awards, organised by Beaton Consulting every year since 2008 and winning sixteen awards over the last eleven years:*

- **2013** - Winner Best Engineering Firm (\$50-200M)
- **2013** - Winner Best Provider to Property
- **2014** - Winner Best Engineering Firm (\$50-200M)
- **2014** - Winner Best Provider to Property
- **2014** - Winner Best Provider to ASX100
- **2014** - Winner Best Provider to Construction
- **2017** - Winner Best Engineering Firm (\$50-200M)
- **2017** - Winner Best Provider to Property
- **2018** - Best Consulting Engineering Firm (\$50-\$200M)
- **2018** - Best Provider to Construction & Infrastructure
- **2018** - Most Improved Net Promoter Score
- **2019** - Best Provider to Construction & Infrastructure
- **2020** - Winner Best Provider to Built Environment Firm (\$50-200M)
- **2021** - Winner Best Provider to Government & Community
- **2021** - Winner Best Provider to Property
- **2022** - Winner Best Provider to Construction & Infrastructure
- **2023** - Best Provider to Built & Natural Environment (\$100-\$200m)
- **2023** - Best Provider to Construction & Infrastructure(>\$30m)
- **2023** - Best Provider to Property (>\$30m)

# Specialists with Inclusion

---

*Douglas Partners recognises that the very best integrated practical solutions in engineering are as result of a diverse and inclusive workforce, each contributing their unique perspective, technical expertise and experience to the task at hand.*

*We remain at the forefront of excellence in our specialised engineering disciplines because of the greater innovation, technical proficiency and strengths our diverse range of consultants and staff possess, no matter whether those diversities include professional interests, technical expertise, gender, ethnicity, cultural, religious or socioeconomic background, age, or any other distinction that makes each of us individual.*

*We aspire for our people to thrive and achieve their best at the things they are passionate about because we care about them and that contributes positively to our business. Being inclusive provides us with a fulfilling work environment that provides the foundation to deliver on our purpose that impacts our clients, community and the environment. We are intentional about embracing difference by listening, being respectful and leveraging it as appropriate because it ultimately supports us to influence diversity*

*Our DEI policy commits us to promoting, encouraging, respecting and recognising inclusion and diversity in the workplace by:*

- Creating a positive and inclusive culture that supports and encourages workplace diversity;*
- Promoting diversity through the inclusion of people with a variety of experiences and perspectives;*
- Encouraging communication and co-operation, so that we can work together in an inclusive and welcoming environment; and*
- Measuring our progress so that we are accountable to ourselves.*



# Sustainability is our Responsibility

---

*Douglas Partners recognises that with a footprint which extends across a wide range of clients, industry sectors and geography we have the opportunity to make a real difference to our communities and the environment, for now and for future generations.*

*We are committed to finding sustainable solutions in our operations as well as with our advice to clients.*

*Our sustainability strategy focuses on the following*

- Partnering with our clients improving water management in areas such as groundwater, wastewater and sewerage networks, water reuse, and drinking water supply systems.*
- Providing clean energy at our branches and hybrid and electric vehicles for our people.*
- Partnering with our clients to investigate, design and build resilient infrastructure, from the foundations up.*
- Reducing our environmental impact, promoting the use of renewable sources of energy and encouraging responsible purchasing decisions across our operations.*
- Enabling good practice in environmental management, minimising the impacts of our activities on the environment, including having ISO 14001 certification.*
- Providing advice to our clients to help improve environmental management of our waterways.*
- Providing contaminated land assessments, management and remediation advice for our clients across Australia.*



# Local capability, world-class talent

---

*For information on how Douglas Partners can assist on your project, please contact one of our branches below or email [info@douglaspartners.com.au](mailto:info@douglaspartners.com.au).*

**BRISBANE** ☎ (07) 3237 8900

**CAIRNS** ☎ (07) 4055 1550

**CANBERRA** ☎ (02) 6260 2788

**CENTRAL COAST** ☎ (02) 4351 1422

**COFFS HARBOUR** ☎ (02) 6650 3200

**DARWIN** ☎ (08) 8948 6800

**GEELONG** ☎ (03) 5221 0711

**GOULBURN** ☎ (02) 4822 8395

**GOLD COAST** ☎ (07) 5568 8900

**MACARTHUR** ☎ (02) 4647 0075

**MELBOURNE** ☎ (03) 9673 3500

**NEWCASTLE** ☎ (02) 4960 9600

**NTH WEST SYDNEY** ☎ (02) 4666 0450

**PERTH** ☎ (08) 9204 3511

**PORT MACQUARIE** ☎ (02) 6581 5992

**SUNSHINE COAST** ☎ (07) 5351 0400

**SYDNEY** ☎ (02) 9809 0666

**TOWNSVILLE** ☎ (07) 4779 9866

**WOLLONGONG** ☎ (02) 4271 1836